

# **Safety Training**

## **CONSTRUCTION SITE AWARENESS**

**John Breck  
Sr. HSE Tech  
Allan Myers**

# **OBJECTIVES:**

**Worst Case Scenario**

**What hazards exist?**

**How can we navigate these hazards/risks?**

**Desired Result**

**Home Safe Tonight**

# What is the Worst Thing that Could Happen?



# Jobsite Hazards



# Someone Might Not See Us



# We Could Fall in a Hole...





...Or from the Same Level



# Trapped In an Excavation





# We Could Get in an Accident



# What is the First Thing We Need To Do?



# Slips, Trips, and Falls



# 2 Types of Falls

- Falls from elevation
- Falls from same elevation
  - Over 1 million Americans suffer a slip, trip or fall injury every year
  - 15% are job related

# Slips and Trips...Causes

- ❖ Wet or oily surfaces
- ❖ Weather hazards
- ❖ Loose rugs
- ❖ Flooring with different degrees of traction
- ❖ Poor lighting
- ❖ Uneven walking surfaces
- ❖ Clutter/Housekeeping
- ❖ Cords and cables
- ❖ Chairs not pushed in







# Prevention: What can YOU Do?

- Eyes on Path
- Appropriate footwear
- Assess the scene
- Take your time and choose your route
- Use Handrails



# What Would You Do?



# Where's Your Path?





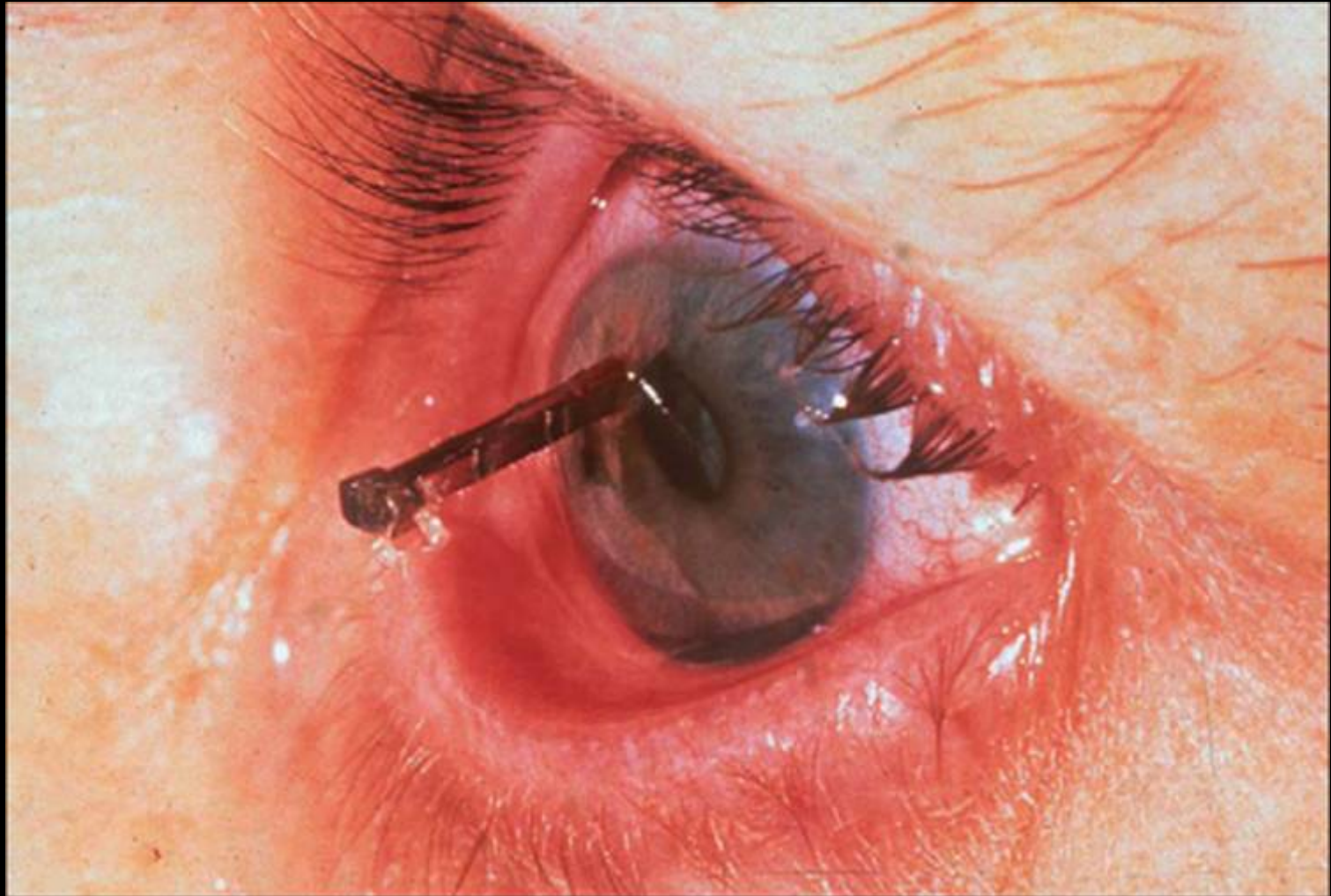
# Personal Protective Equipment



# Is PPE Really Necessary?



**DO I REALLY NEED SAFETY GLASSES?**





# Mobile Equipment: Make Sure You Can be Seen



# Mobile Equipment - Visibility

Vision blockers in a typical Tri-Axle.

Worker standing





# Mobile Equipment - Visibility



# Mobile Equipment - Visibility



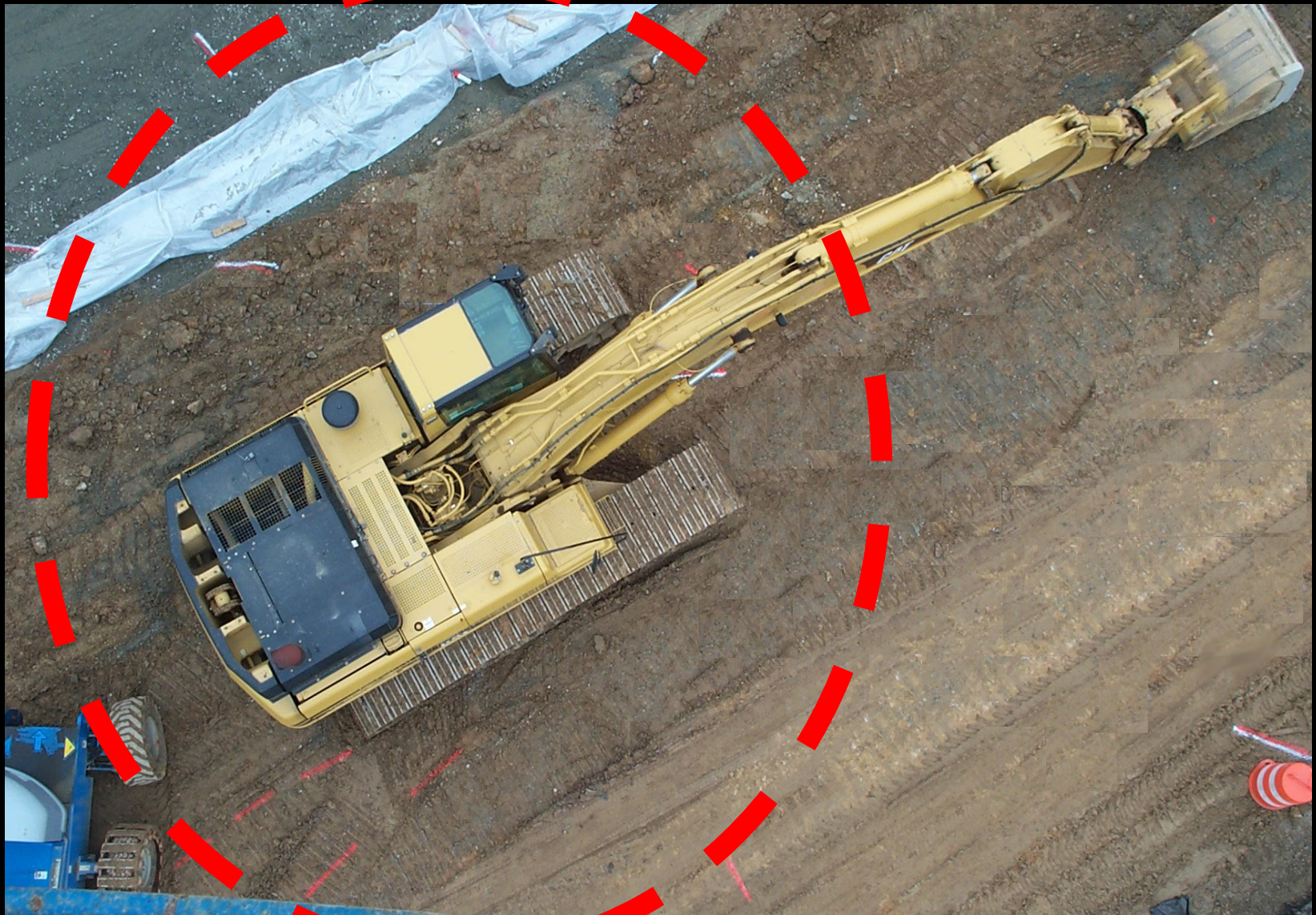


# Mobile & Heavy Equipment

## Visibility



# The Red Zone





With the boom here



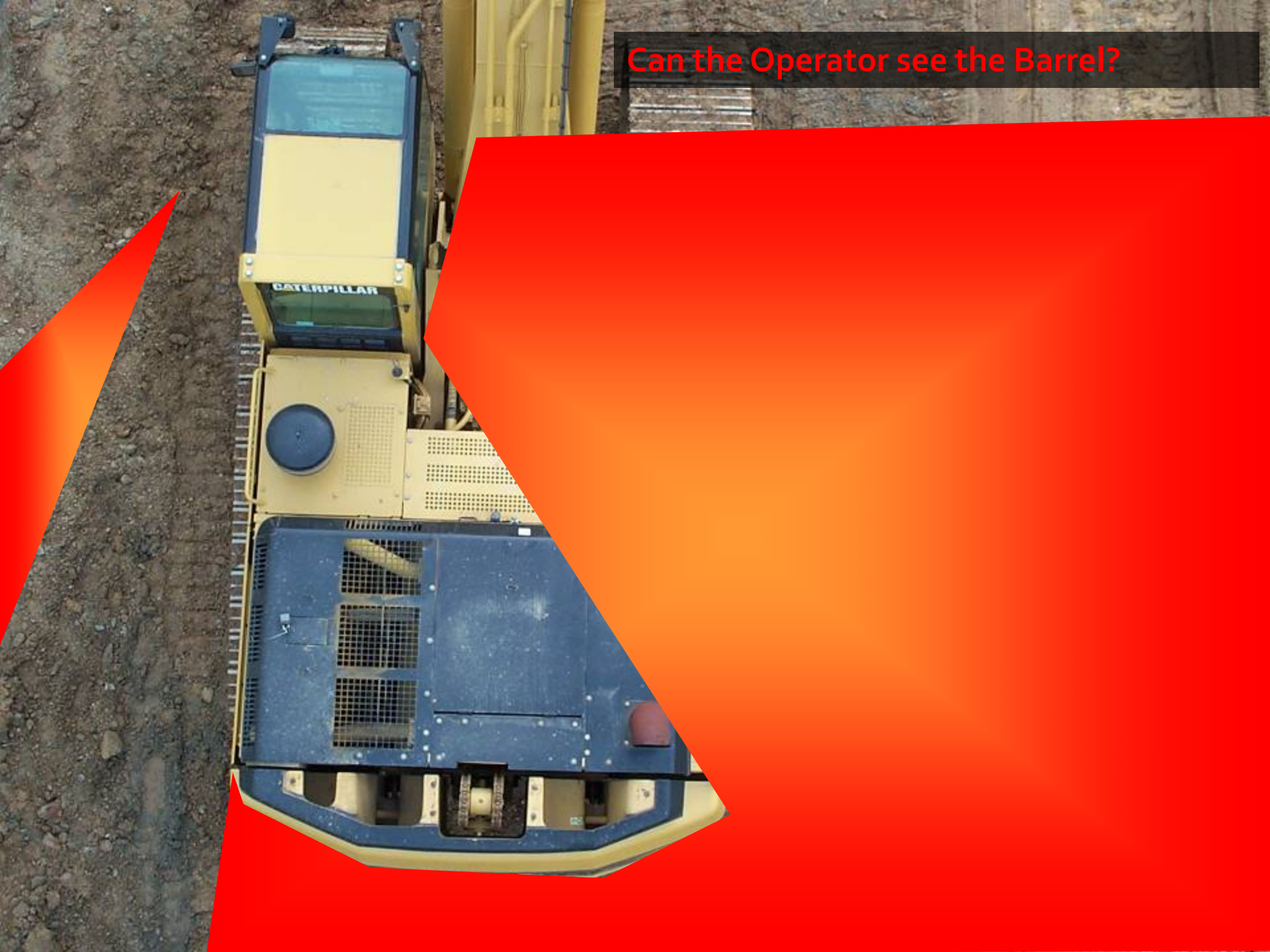


With bucket up, visibility is fair.





Can the Operator see the Barrel?



Bucket extended, visibility is poor.

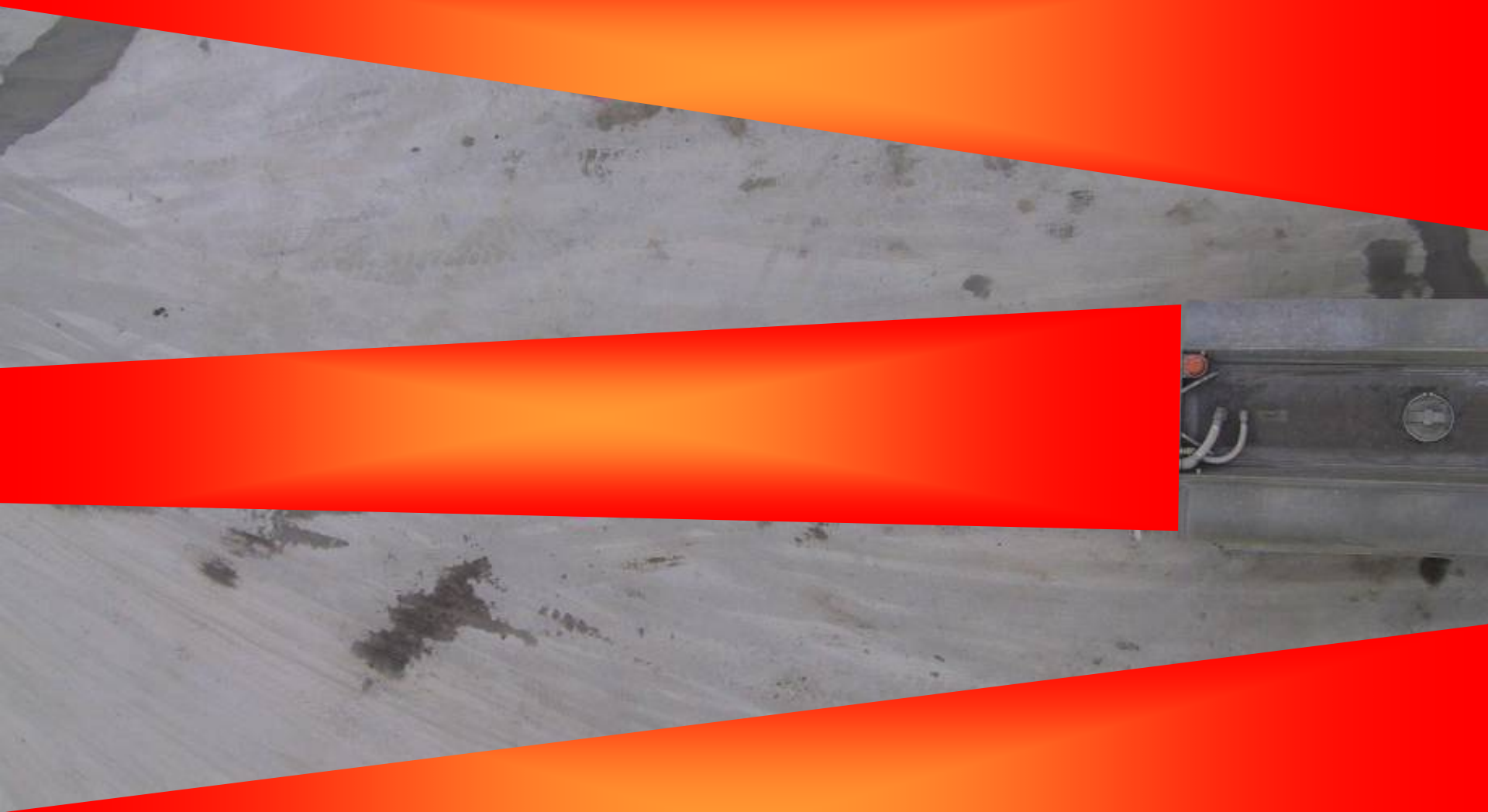


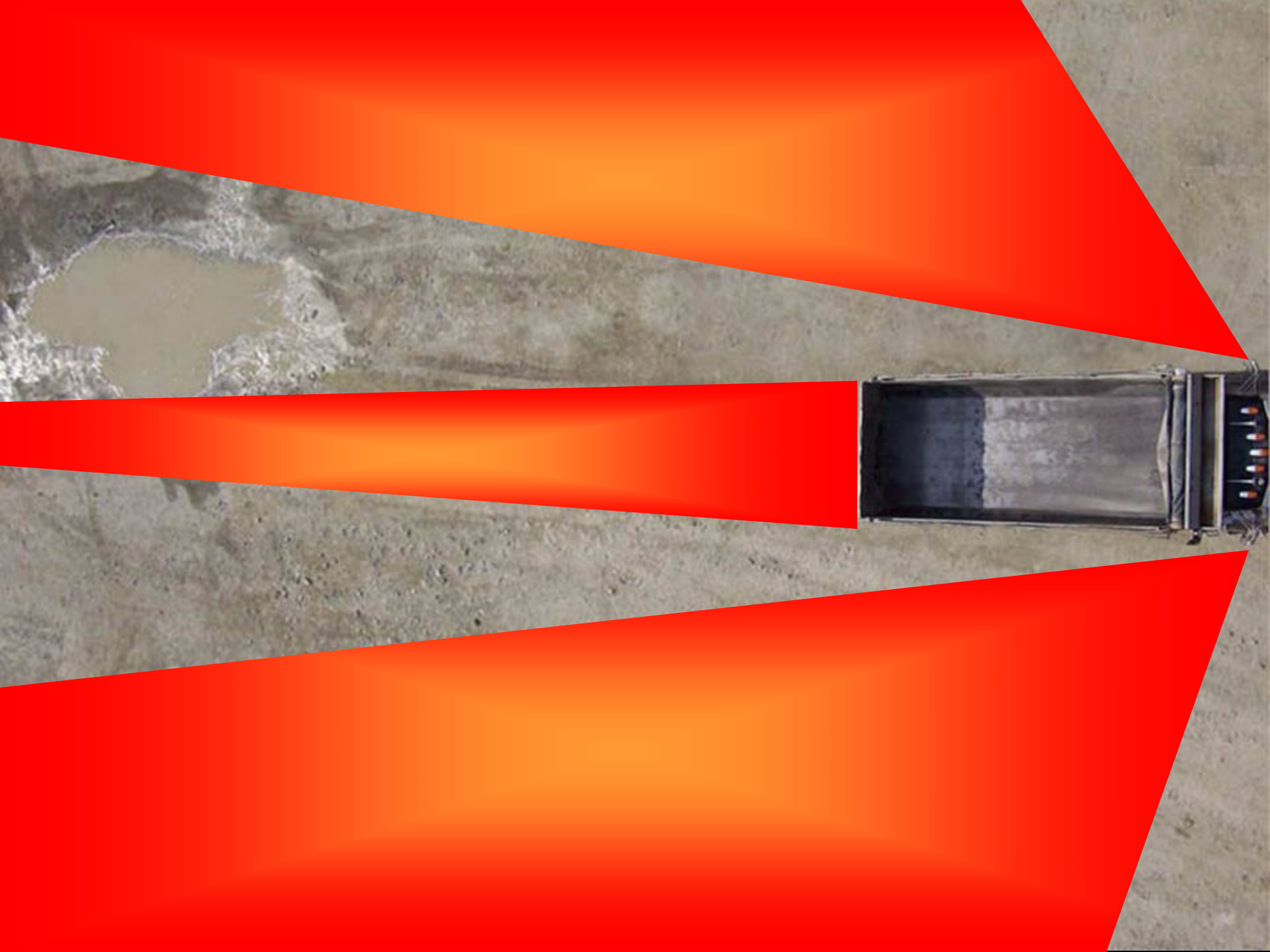














# Engulfment

- The surrounding and effective capture of a person by a liquid or finely divided (flowable) solid substance that can be aspirated to cause death by filling or plugging the respiratory system, or that can exert enough force on the body to cause death by strangulation, constriction, or crushing.

## Cause

- Trench Cave-ins
- Excavation Collapse



















# Barricade Excavations

- Excavations must be barricaded or marked if they are not readily visible







Trench Cave-in.wmv

# Road Work



# How are Accessing Our Work Area?

---

- Emergency Pull Off (EPO)
- Contact site supervisor
- Visit the job office

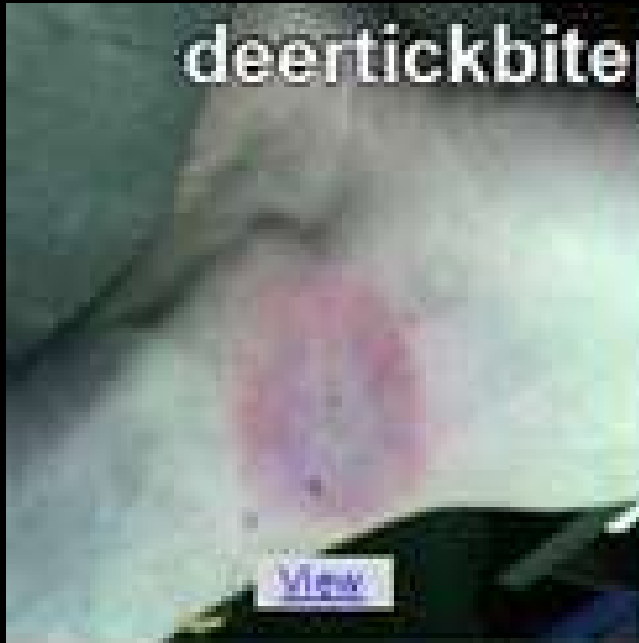


OTHER HAZARDS INCLUDE  
CRANES  
OVERHEAD WORK  
FALLING OBJECTS  
Hazardous Chemicals  
Ferrell Animals  
The List Goes On



# Critters

deertickbitepictures.com



[View](#)



[View](#)

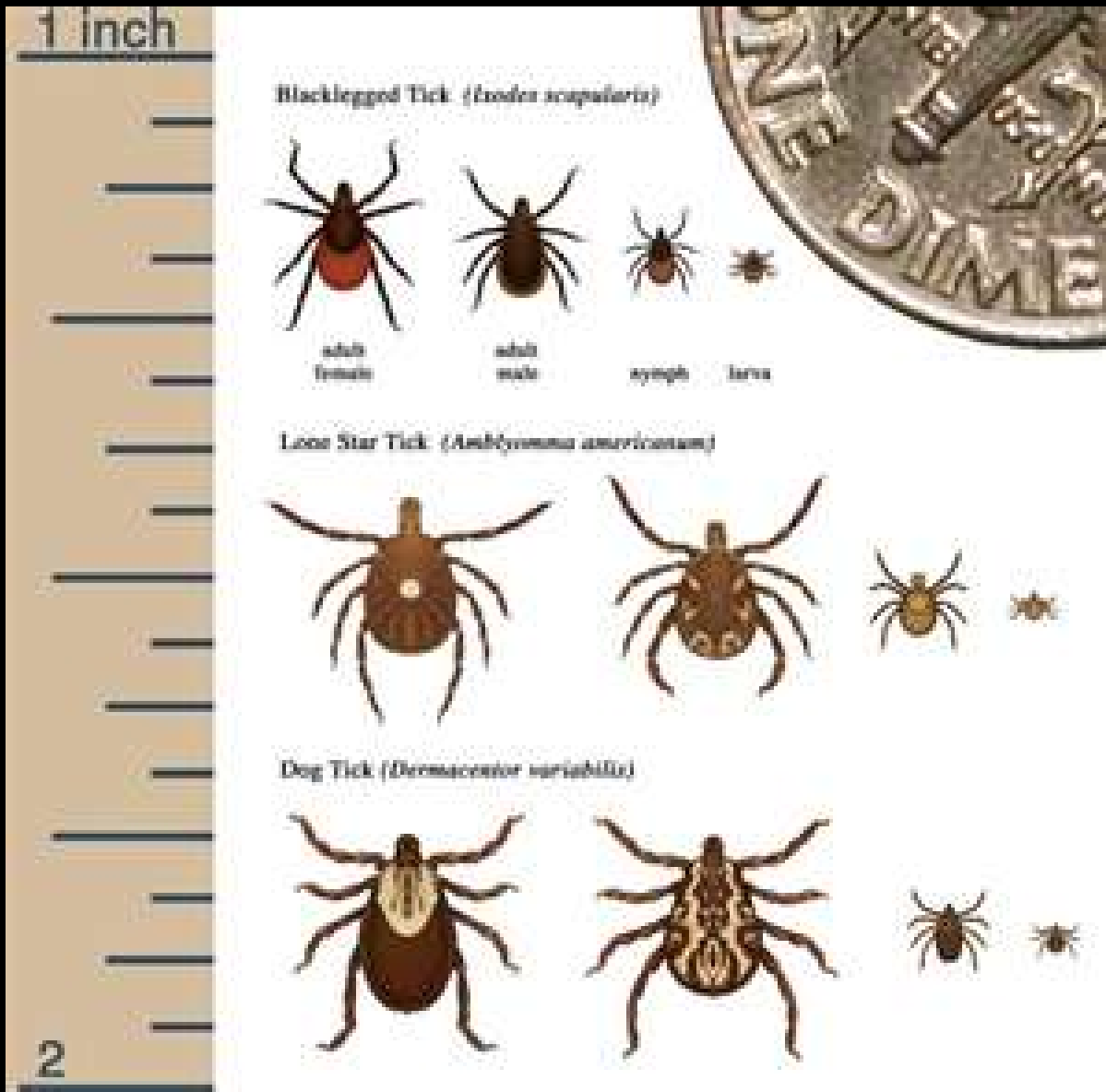


[View](#)



[View](#)







**What do you do if you are snake  
bit?!?!?**





## First Aid for a Snake bite

**CALL FOR IMMEDIATE HELP CALL 9-1-1**

**Don't panic, remain calm and seek medical attention immediately**

Give exact location, if in a remote area meet at a known cross road or intersection. **Comfort the victim!!!!**

If you are bit try to identify the snake without exposing yourself or others to another snake bite

Is the snakes tail pointed, does it have rattle segments and what color is it? Coral snakes are one of the lethal snakes that have no rattles that are also local residents, but are equally as **dangerous**

Wash area with soap and clean water

## First Aid continued

Immobilize the bitten area and keep it lower than your heart

If the bite is on the hand or arm remove any rings, watches or tight clothing

Swelling will occur, pain and tingling, numbness and difficulty in breathing

DO NOT give the victim any ibuprofen or aspirin this will thin the blood and complicate matters

DO NOT apply a tourniquet

DO NOT apply ice or any other cooling to the bite, research has shown this to be potentially harmful

## Housekeeping and Spring Cleaning

- Clean all shrubs, bushes and plant life of overgrowth and allow a clearing of at least ten (10") inches
- Remove old piles of wood, stacked wood or firewood. Mice have to file their teeth and wood is the best property for them to stay
- If you have a rodent problem call your exterminator and get a rodent prevention program in place with regularly scheduled treatments.....if you remove the food source you remove the predator/snakes
- Basic Spring Cleaning, at this time of the year be especially careful to look under what you are about to pick up, there could be a snake



**Be aware of your surroundings**



# Stay Alert to all Hazards







# Lightning Myth - 1

- Lightning strikes only on tall objects!

But the probability of a tall object getting struck is higher! In African animal parks, more **Giraffes** die of lightning than any other animal!

# Lightning Myth - 2

Lightning Never strikes the same place twice!

- EMPIRE STATE BUILDING HAS BEEN STRUCK 25 TIMES!!!!



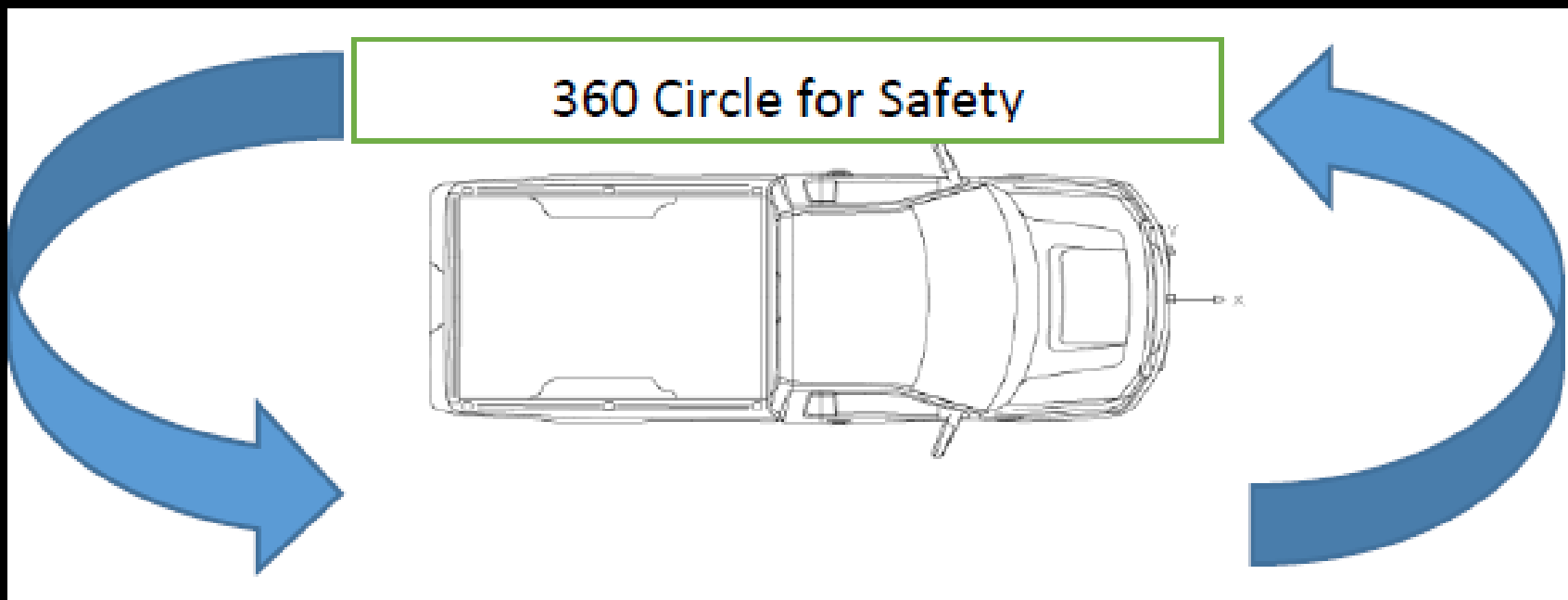
# Blasting

[http://www.youtube.com/watch?v=IGQmdoK\\_ZfY](http://www.youtube.com/watch?v=IGQmdoK_ZfY)

# Explosives







# 360 Circle for Safety Program

# QUESTIONS

---

Safety is your responsibility !!!

Safety is the easy part !!! Explaining a serious injury or death to a loved one is the difficult part.

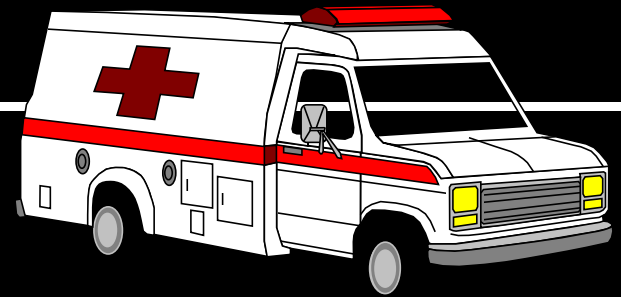


# Awareness Test



Awareness Test\_1.wmv

# Remember



- No job is worth dying for. Use some common sense, and the standards we have talked about today- and everyone goes...

## HOME SAFE TONIGHT