



Non-point Source Compliance Data Management

Nutrient Management and Manure Management
Chesapeake Bay

Learning Objectives

- Identify the data that is managed by and reported to the Non-point Source (NPS) Compliance Section, the Chesapeake Bay Office, and SCC.
- Understand the CD reporting requirements for the data managed by and reported to NPS Compliance, Bay Office, and SCC.
- Understand opportunities to enhance CD internal operations using the data managed by and reported to NPS Compliance, Bay Office, and SCC.

Nutrient Management and Manure Management

- Level 2 Plan Approval Report – Attachment F
- Manure Management Manual Reporting
(Chapter 91) – Attachment G
- Level 2 Quarterly Report – Attachment H

Nutrient Management and Manure Management

- Data is aggregated and used to report and track:
 - Number of active NMPs
 - Number of animals/animal type and the amount of manure generated
 - Manure transfers outside the county of origin and CB watershed
 - Existing manure storages (planned)
 - Compliance with planning and implementation
 - Progress toward delegation outputs
 - Implemented MMPs related BMPs (planned)

Chesapeake Bay

Agriculture Initial Inspections – Inspection Report Data

- CD should enter all Agriculture Initial Inspections in PK.
- The AI Module can be used as a mobile inspection application.
 - The data entry will be completed as the inspection is completed.
 - The inspection report can be generated in and printed from PK.

Chesapeake Bay

Agriculture Initial Inspections – Inspection Report Data

- Data is aggregated and used to report and track:
 - Progress toward contract outputs
 - NMP Core N BMPs
 - Reverification of AWS Facilities
 - Compliance with planning and implementation of MMPs and Ag. E&S Plans.

Opportunities

- Standard Reports can inform managers and staff of the work completed and encourage staff accountability.
- Data Explorer reports can inform a quantitative evaluation of any information recorded in PK.
 - Hot spots (Watersheds/townships) of work completed
 - funding source trends
- Spatial data can inform a targeted approach to outreach, planning, implementation, or verification efforts.

Opportunities - Standard Reports

Technical Work Report – Manager’s Summary

Report Period: 1/1/2018-3/31/2018

Technician: ██████████

Practice Implemented	Landowner	Watershed	Units Installed	Date Practice Completed	Farm Bill Practice
578	██████████ ██████████	PEQUEA CREEK	1 Quantity	01/10/2018	CTA

Technician: ██████████

Practice Implemented	Landowner	Watershed	Units Installed	Date Practice Completed	Farm Bill Practice
558	██████████ ██████████	BIG BEAVER CREEK	91 Feet	03/19/2018	Exelon
561	██████████ ██████████	BIG BEAVER CREEK	0.0400 Acres	03/19/2018	Exelon
620	██████████ ██████████	BIG BEAVER CREEK	72 Feet	03/19/2018	Exelon
313	██████████ ██████████	COOPERS RUN	1	03/09/2018	Exelon
382	██████████ ██████████	COOPERS RUN	72 Feet	03/09/2018	Exelon
561	██████████ ██████████	COOPERS RUN	0.0088 Acres	03/09/2018	Exelon
635	██████████ ██████████	COOPERS RUN	0.0840 Acres	03/09/2018	Exelon

NOTE

Farm Bill Practice =
Funding Code

This is not always
related to the Farm Bill.

Opportunities - Standard Reports

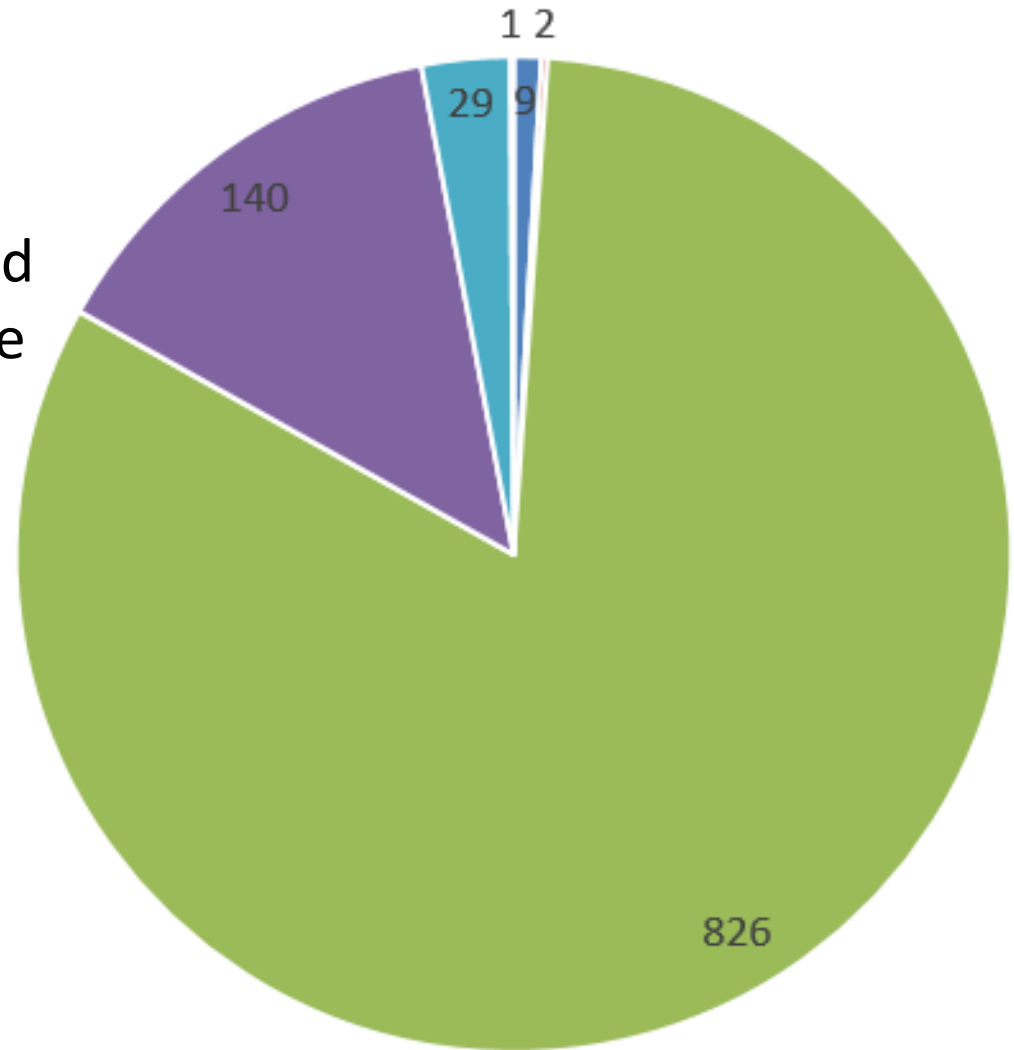
- **Technical Work Report** – All BMPs implemented by technician
- **Technical Design Report** – All BMPs designed by technician
- **Conservation Planning Work Report** – All Conservation Plans and Ag. E&S Plans completed by technician
- **BMP Progress Report** – Outstanding BMPs that have been designed by the CD that are not fully implemented with responsible technician identified
- **CBP-23** – Required for Bay Reporting; also a great summary of the technical and planning work completed by the CD with the technician identified

Reports

- 102/NPDES Program Report
- 105 Program Report
- Act 49 Report
- Attachment-G Report
- Attachment-H Report
- BMP Progress Report
- BMP Warehouse Upload Report
- CBP 23 Report
- Chapter 102/105 Summary Report
- Conservation Planning Work Report
- Employee Work Report
- Level 2 Plan Approval Report Report
- PDG Report
- Technical Design Report
- Technical Work Report

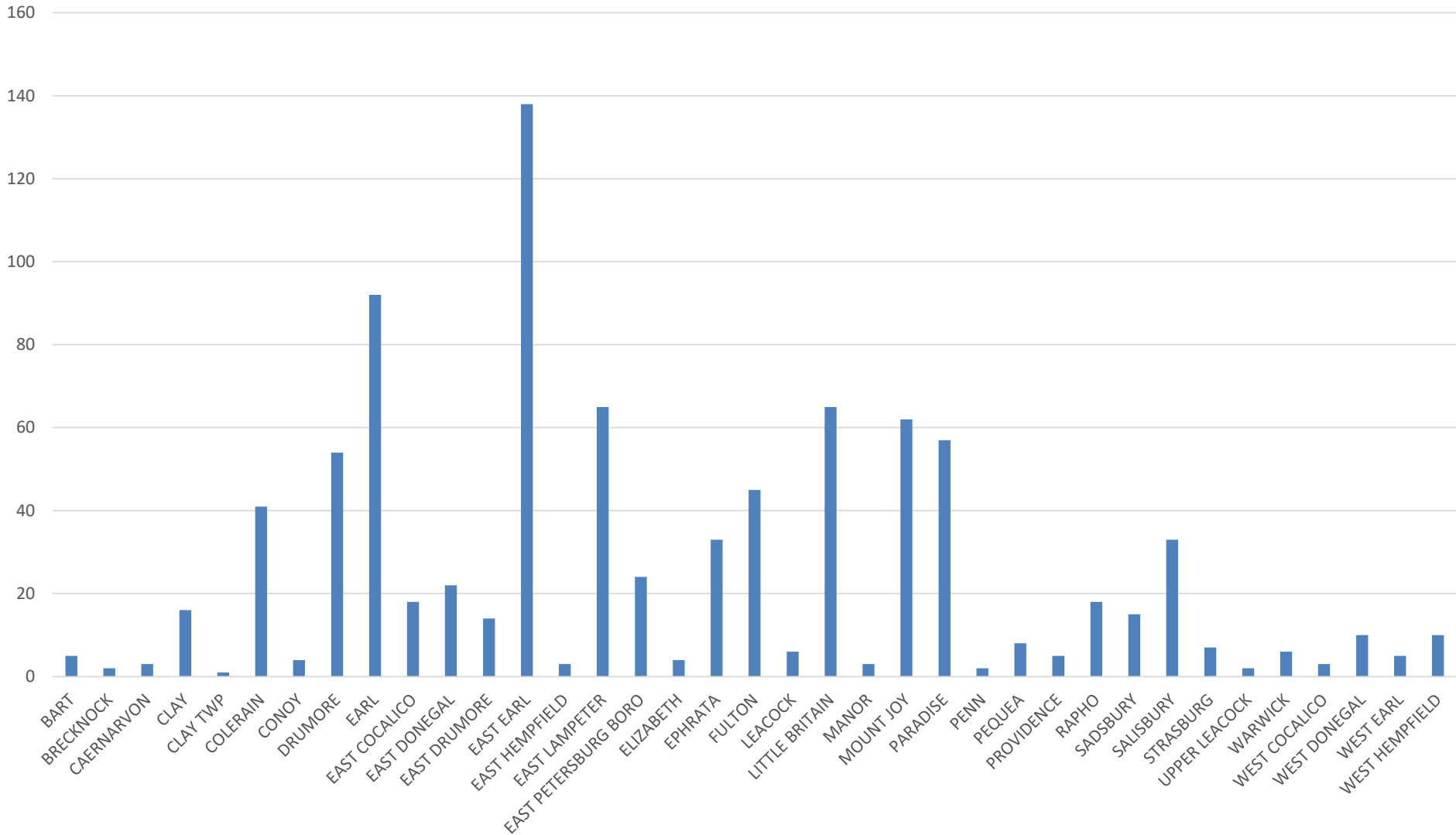
Opportunities – Data Explorer

Number of Implemented BMPs by Funding Source



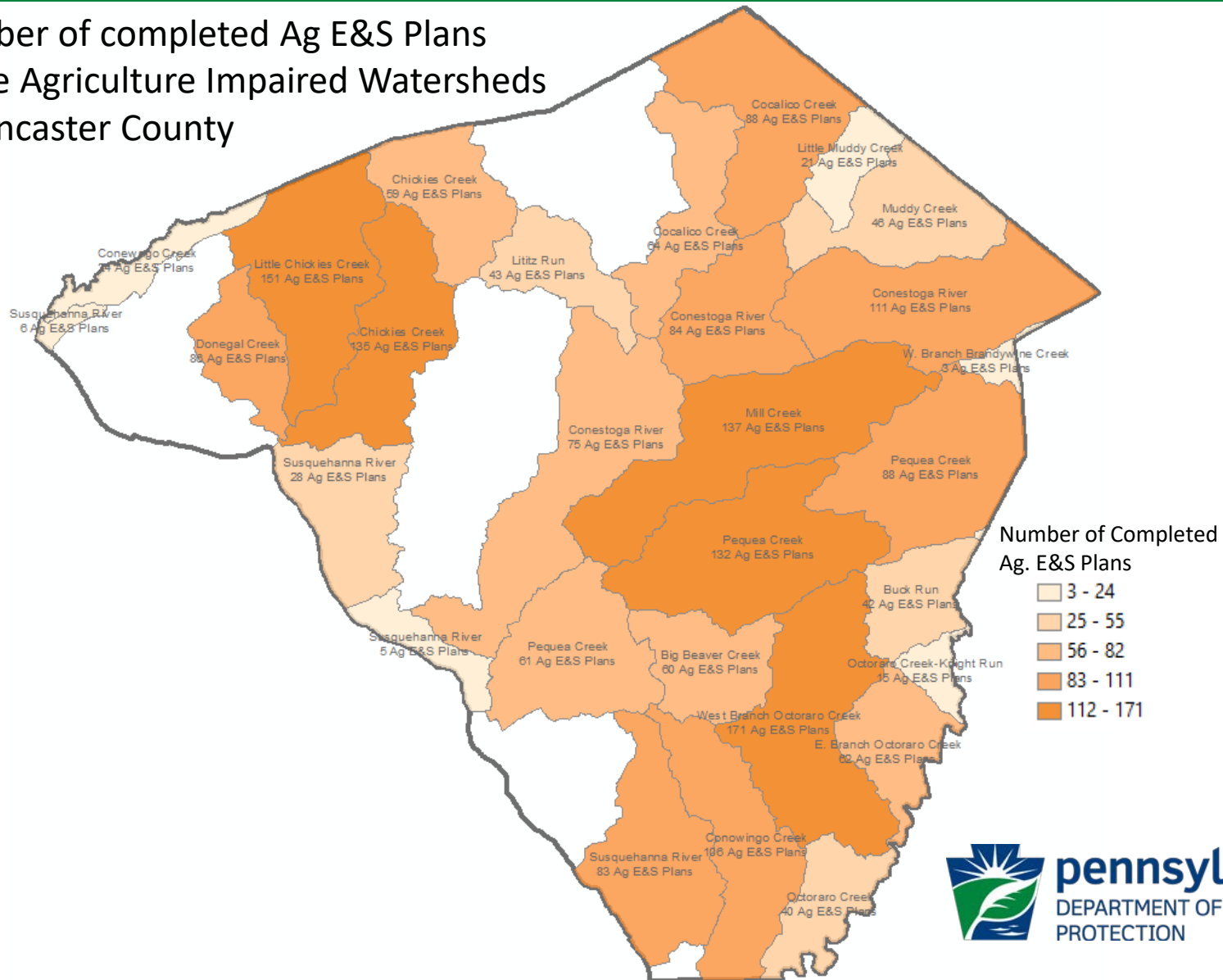
Opportunities – Data Explorer

Number of Implemented BMPs by Township

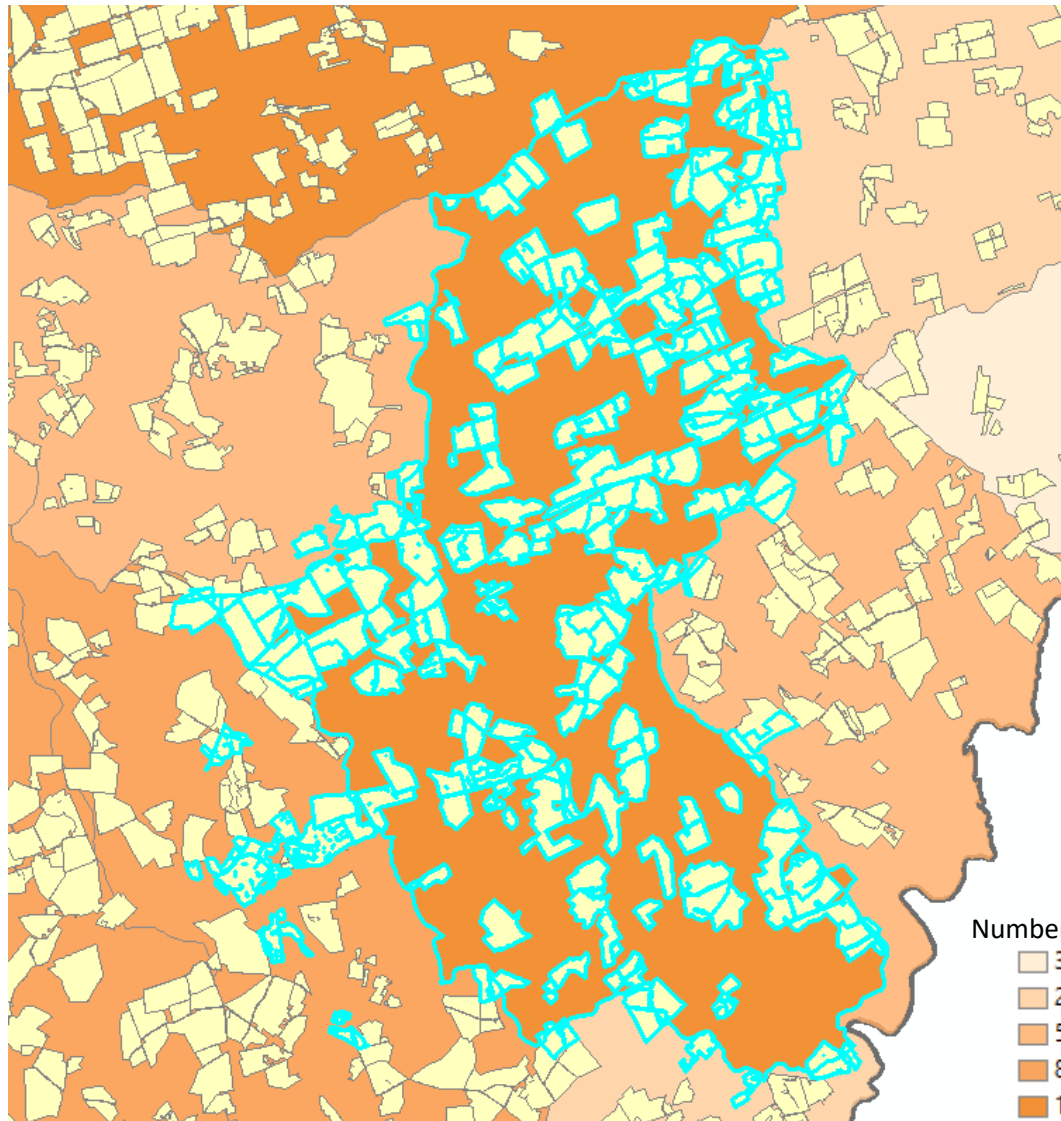


Opportunities – Spatial Data

Number of completed Ag E&S Plans
In the Agriculture Impaired Watersheds
of Lancaster County



Opportunities – Spatial Data



Once a decision is made of where to target, a list of plans and associated PK data can be generated to assist with the outreach effort.

identifier
CP-36-00015
CP-36-00016
CP-36-00022
CP-36-00027
CP-36-00029
CP-36-00033
CP-36-00038
CP-36-00070
CP-36-00099

Summary

- All data administered by NPS Compliance helps track progress toward our Chesapeake Bay goals and advocate for the work completed by the CDs.
- The data in PK can be used by the CD to improve internal operations by:
 - Tracking in-progress and completed work
 - Identifying planning and implementation trends
 - Targeting outreach, planning, implementation, and verification efforts



pennsylvania

DEPARTMENT OF ENVIRONMENTAL
PROTECTION



Bureau of Clean Water

Contact Information:

Kate R. Bresaw
Water Program Specialist
Nonpoint Source Compliance Section
Bureau of Clean Water
kbresaw@pa.gov
(717) 772-5650