



DCNR Updates

September 19th, 2024

DCNR History

Established on July 1, 1995, the Pennsylvania Department of Conservation and Natural Resources (DCNR) is charged with:

- Maintaining and protecting 124 state parks.
- Managing 2.2 million acres of state forest land.
- Providing information on the state's ecological and geologic resources.
- Establishing community conservation partnerships with grants and technical assistance to benefit rivers, trails, greenways, local parks and recreation, regional heritage parks, open space, and natural areas.



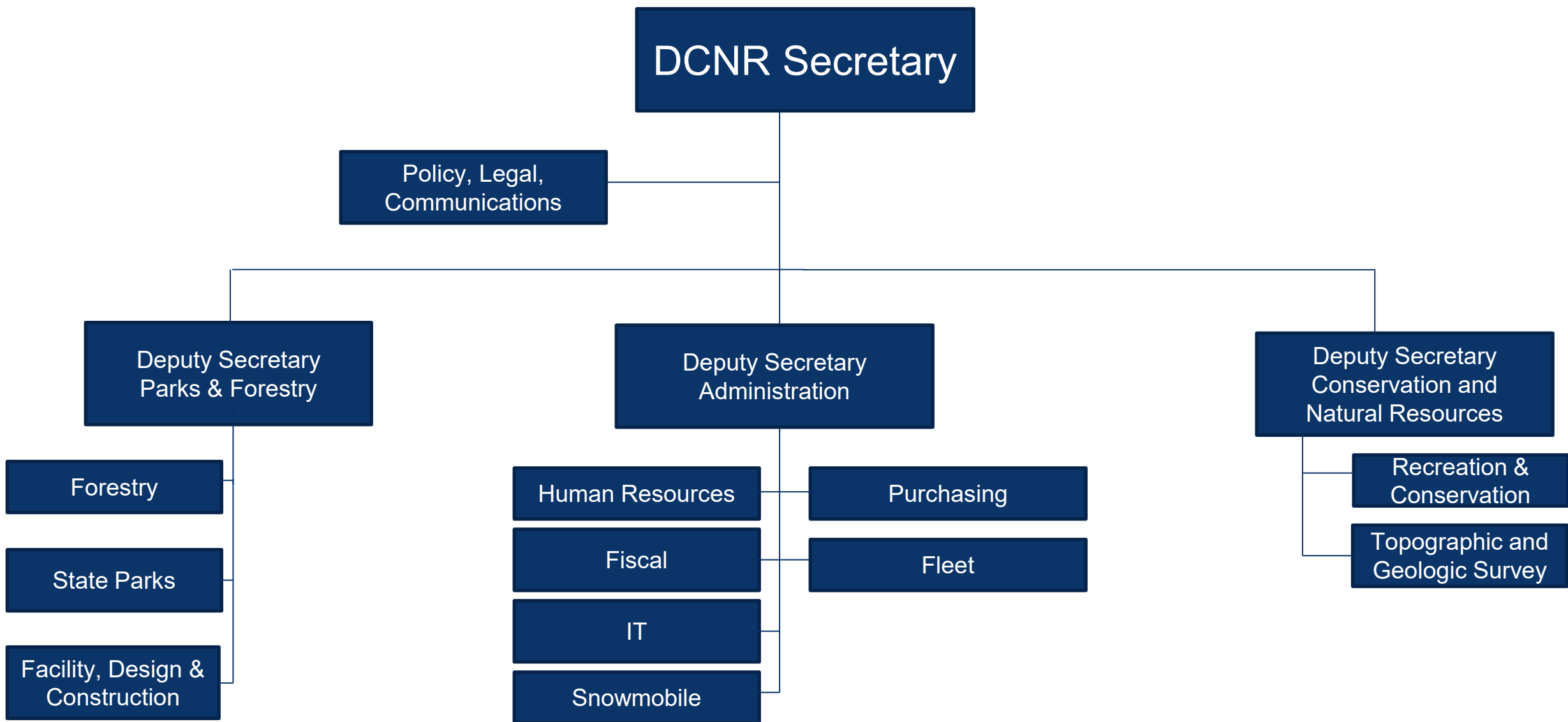
DCNR Mission:

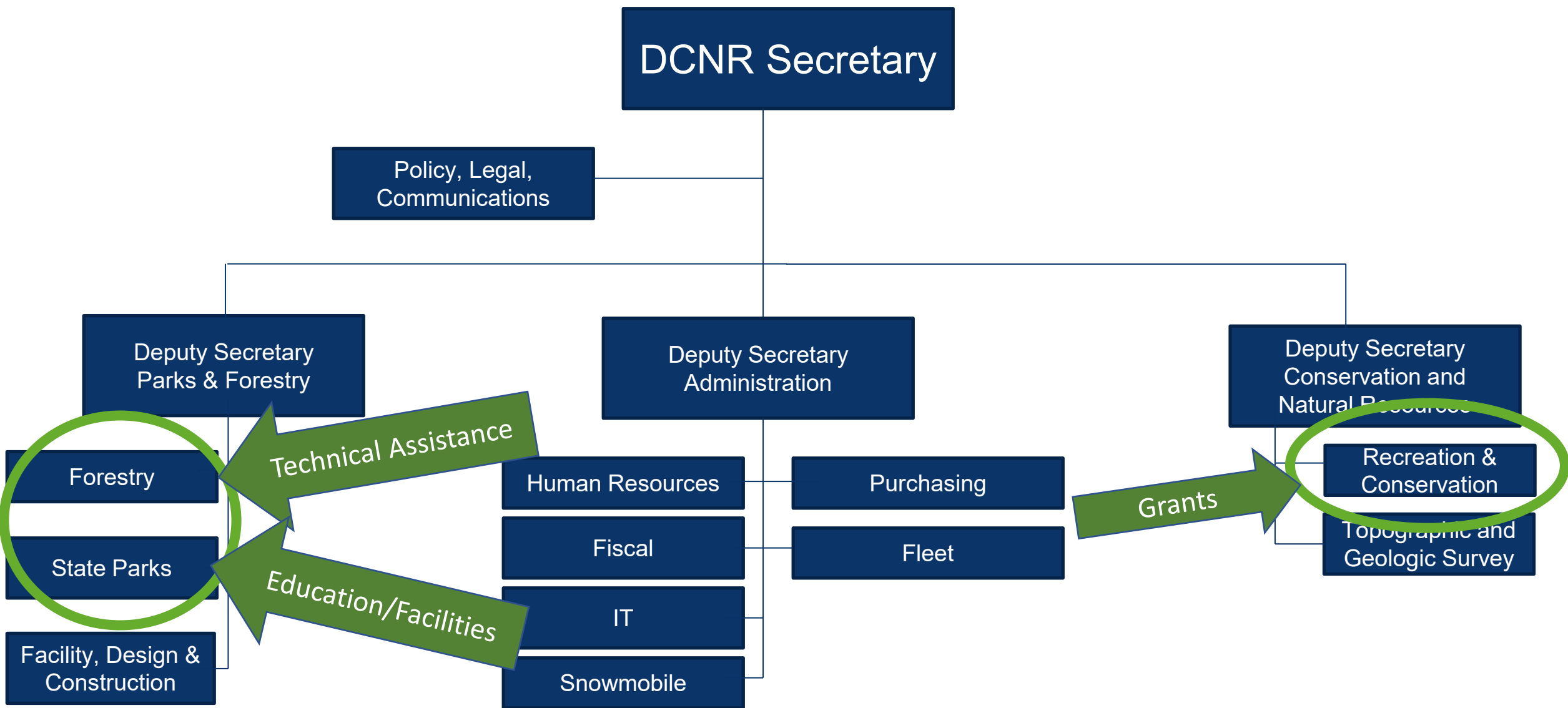
To conserve and sustain Pennsylvania's natural resources for present and future generations' use and enjoyment.

DCNR Bureaus

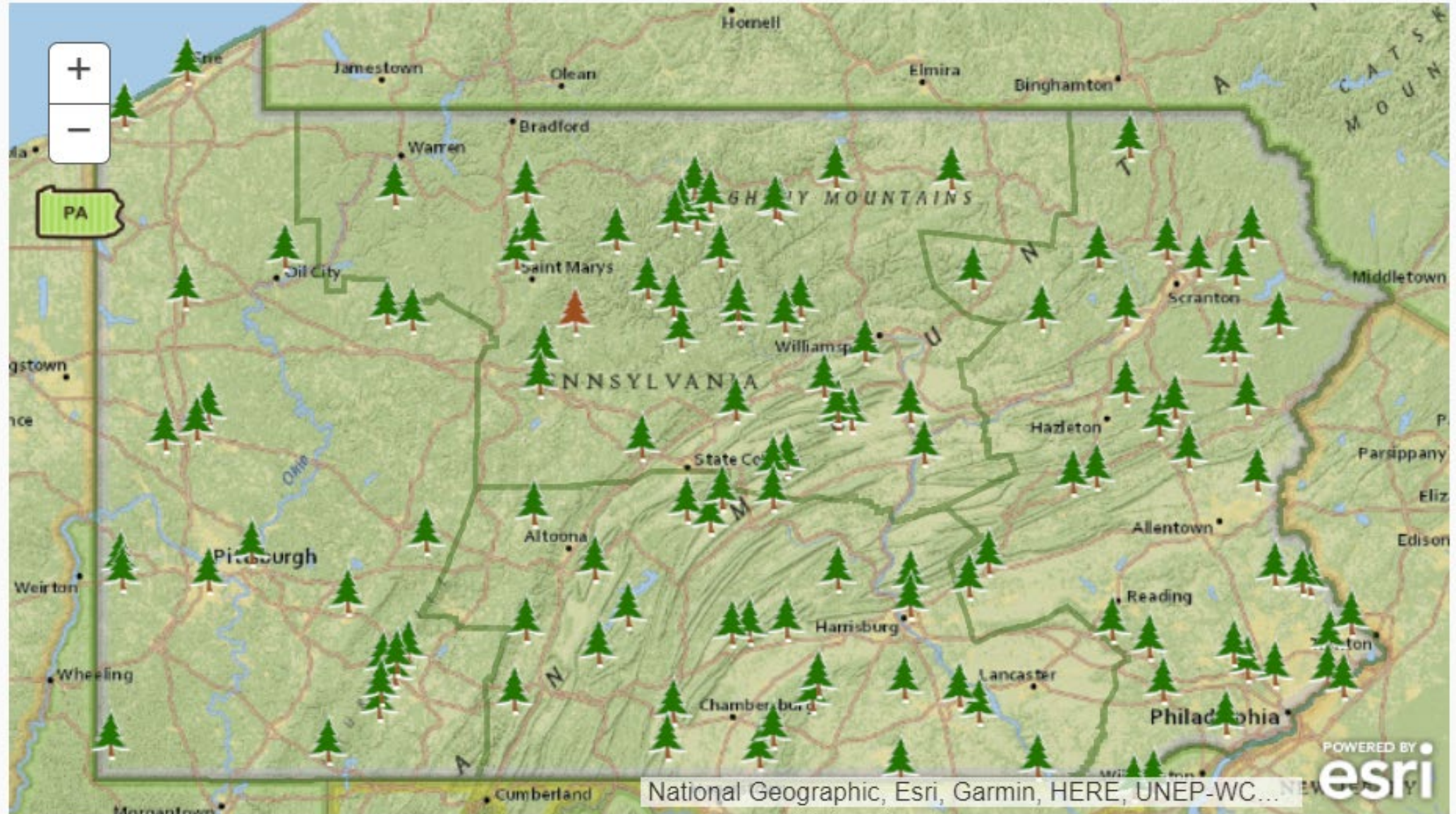
- **Bureau of State Parks**
- **Bureau of Recreation and Conservation**
- **Bureau of Forestry**
- Bureau of Geological Survey
- Bureau of Facility Design and Construction
- Bureau of Administrative Services







Bureau of State Parks: 124 PA State Parks



Bureau of Recreation & Conservation

Community Conservation Partnership Program (C2P2) Grants

What kinds of projects can be funded?

The Community Conservation Partnerships Program combines multiple funding sources and grant types into one convenient application. Project types eligible for funding include:



Recreation and Conservation Planning

Planning grants support:

- Comprehensive park, recreation, open space, and greenway plans
- Master site development plans
- Swimming pool complex and indoor recreation facility feasibility studies
- Land conservation and stewardship plans



Park Rehabilitation and Development

Development grants support:

- Rehabilitation and/or new development of outdoor recreation and park facilities that are open to the public
- Example facilities: playgrounds, skateparks, ballfields, pools, splash pads, pavilions, indoor recreational facilities, and more



Small Community Development

Small Community grants are for municipalities with a population of 5,000 or less. They support:

- Rehabilitation and/or new development of basic outdoor recreation and park facilities that are open to the public
- Examples: playgrounds and pavilions with ADA access



Land Acquisition and Conservation

Acquisition grants support:

- Land purchases for:
 - Critical habitat and open space
 - Community recreation areas
 - Trail corridors and greenways
- Conservation easement purchases



Trails

Trail grants support both motorized and non-motorized trails. At least 75 percent of total project costs must be trail-related. Trail grants support:

- Planning, acquisition, development, and rehabilitation of trails and trail facilities
- Trail educational programs



ATV and Snowmobile

ATV and Snowmobile grants are unique in having two application periods annually. The spring round is open February to March. The fall round is open August to September.

ATV and Snowmobile grants support:

- Planning, acquisition, development, rehabilitation, or equipment purchase for ATV and/or snowmobile trails and facilities
- ATV and/or snowmobile educational programs



Rivers Conservation and Development

Rivers grants support:

- Stream/wetland restoration
- Small dam removal
- Boat launches, boardwalks, and fishing access
- River/watershed conservation plans and master site development plans



Community and Watershed Forestry

Community and Watershed Forestry grants support tree and meadow plantings including:

- Riparian forest buffers
- Lawn conversion to forest or meadow
- Community tree planting, including TreeVitalize
- Combined practices at multiple installations



State and Regional Partnerships

Partnership grants support projects at multi-municipal, regional, and statewide scales such as:

- Convening, education, and training
- Special purpose planning projects
- Implementation of previously completed plans
- Mini-grant programs
- State-designated Heritage Areas
- Conservation Landscapes
- Peer and Circuit Rider grants



*Need funding for your park, trail,
or conservation project?*

Start here.

The Department of Conservation and Natural Resources (DCNR) is hosting its annual grant workshop virtually this November. Those interested in applying for grants in 2025 are strongly encouraged to attend. Get info on applying for grants to support:

The statewide, virtual workshop will be on:

**Thursday,
Nov. 7, 2024**



Community
Recreation
Planning &
Development



Trail
Planning &
Construction



Land
Acquisition &
Conservation



Rivers
Conservation



Community &
Watershed
Forestry



State &
Regional
Partnerships

**Register FREE at events.dcnr.pa.gov
or by scanning this QR code**

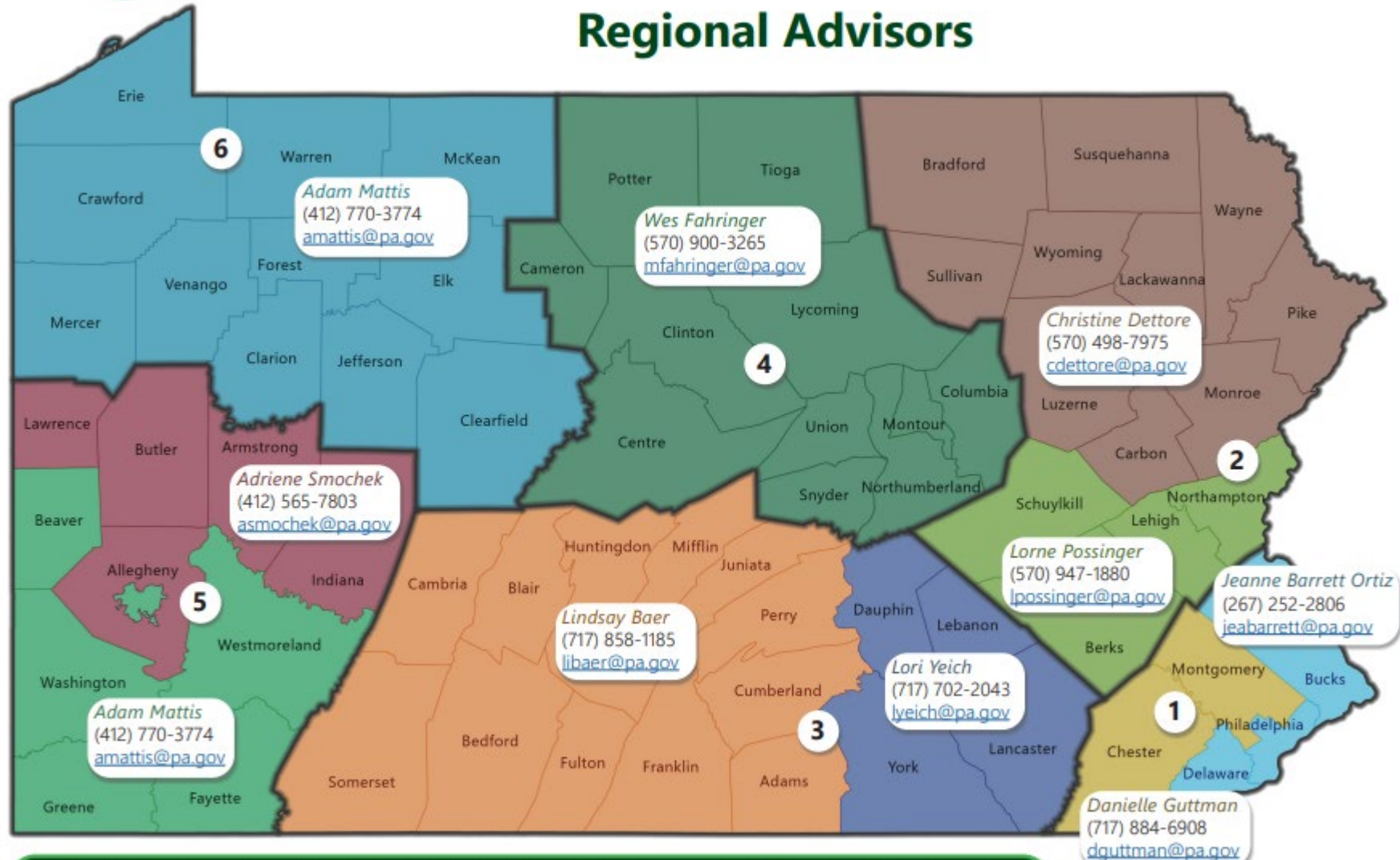


pennsylvania
DEPARTMENT OF CONSERVATION
AND NATURAL RESOURCES



BUREAU OF RECREATION AND CONSERVATION

Regional Advisors



The DCNR Bureau of Recreation and Conservation (BRC) provides grants and technical assistance for community projects related to park and recreation facilities, trails, rivers, and open space.

Regional advisors are a first point of contact for technical, funding, and partnership-building assistance to advance these types of projects.

Scan or click this QR code to learn more about BRC grants and programs.



pennsylvania
DEPARTMENT OF CONSERVATION
AND NATURAL RESOURCES



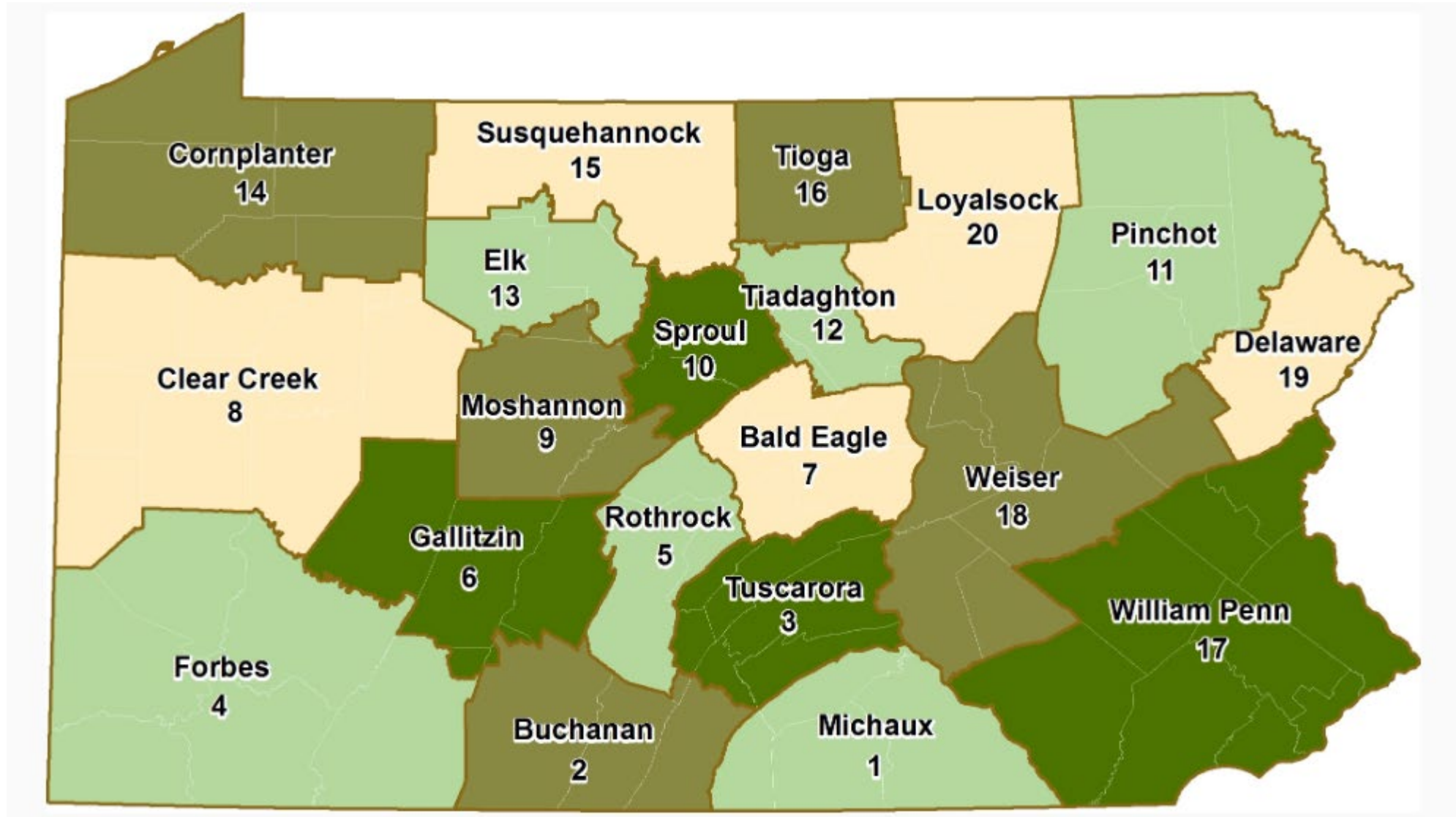
Updated: August 9, 2024

C2P2 Community & Watershed Forestry Grants

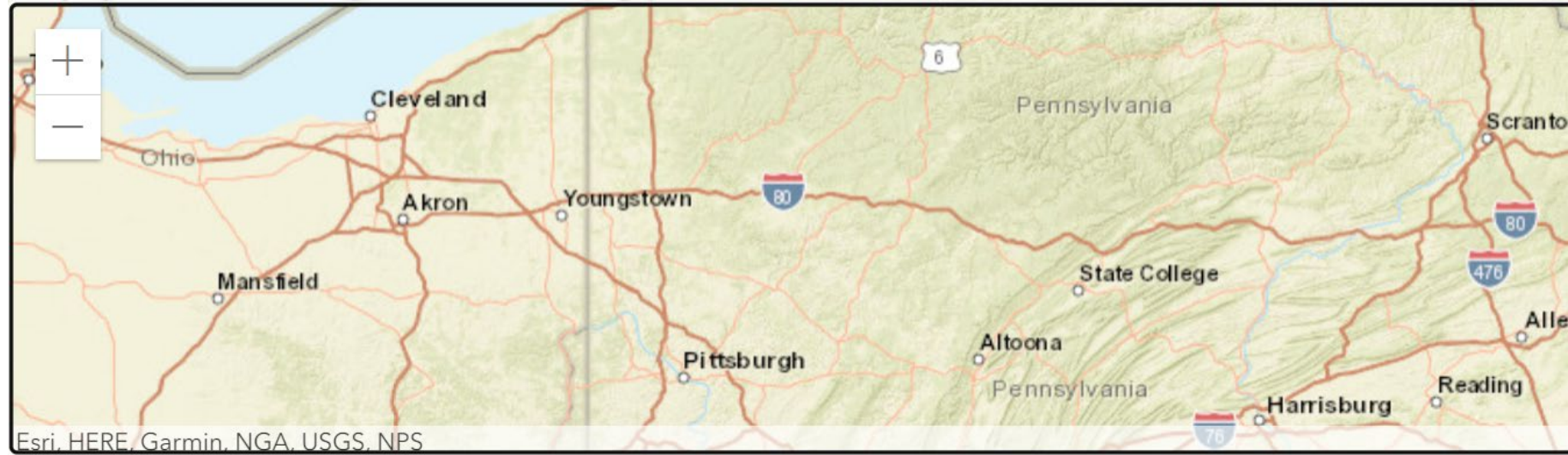
- Can fund:
 - Riparian Forest Buffers
 - Lawn-to-Habitat Projects
 - Urban and Community Forestry Projects
- Minimum Grant Ask is \$50K
- UPDATED Match Requirement! Now 20% of project cost.
- Can fund staff time related to project management beyond 5% admin cap.
- PACD a regular applicant; CDs can tap funding through PACD Mini-Grants.
- CDs can also apply for their own full grants, if interested.
- 25-year landowner agreements required for all Watershed Forestry plantings.
- Grant contracts are typically four years in length.



Bureau of Forestry: 2.2M Acres of State Forest Land



Bureau of Forestry



Service Foresters

County Extension

NRCS

Consulting Foresters

Service Foresters

COUNTY	SERVICE FORESTER	DISTRICT	PHONE	EMAIL	TYPE
Adams	Matthew Kern	Michaux	(717) 637-1770	mkern@pa.gov	Rural
Allegheny	Michael Doucette	Forbes	(724) 238-1200	midoucette@pa.gov	Rural
Allegheny	Levi Canon	Forbes	(724) 238-1200	Lcanon@pa.gov	Urban
Armstrong	Jessica Pierce	Clear Creek	(724) 865-2131 ex119	jespierce@pa.gov	Rural
Beaver	Jessica Pierce	Clear Creek	(724) 865-2131 ex119	jespierce@pa.gov	Rural
Bedford	Dave Scamardella	Buchanan	(717) 485-3148	dscamardel@pa.gov	Rural
Berks	John Nissen	William Penn	(610) 582-9660	jnissen@pa.gov	Rural
Blair	Mandy Burdooon	Gallitzin	(814) 472-1862	mburdooon@pa.gov	Rural

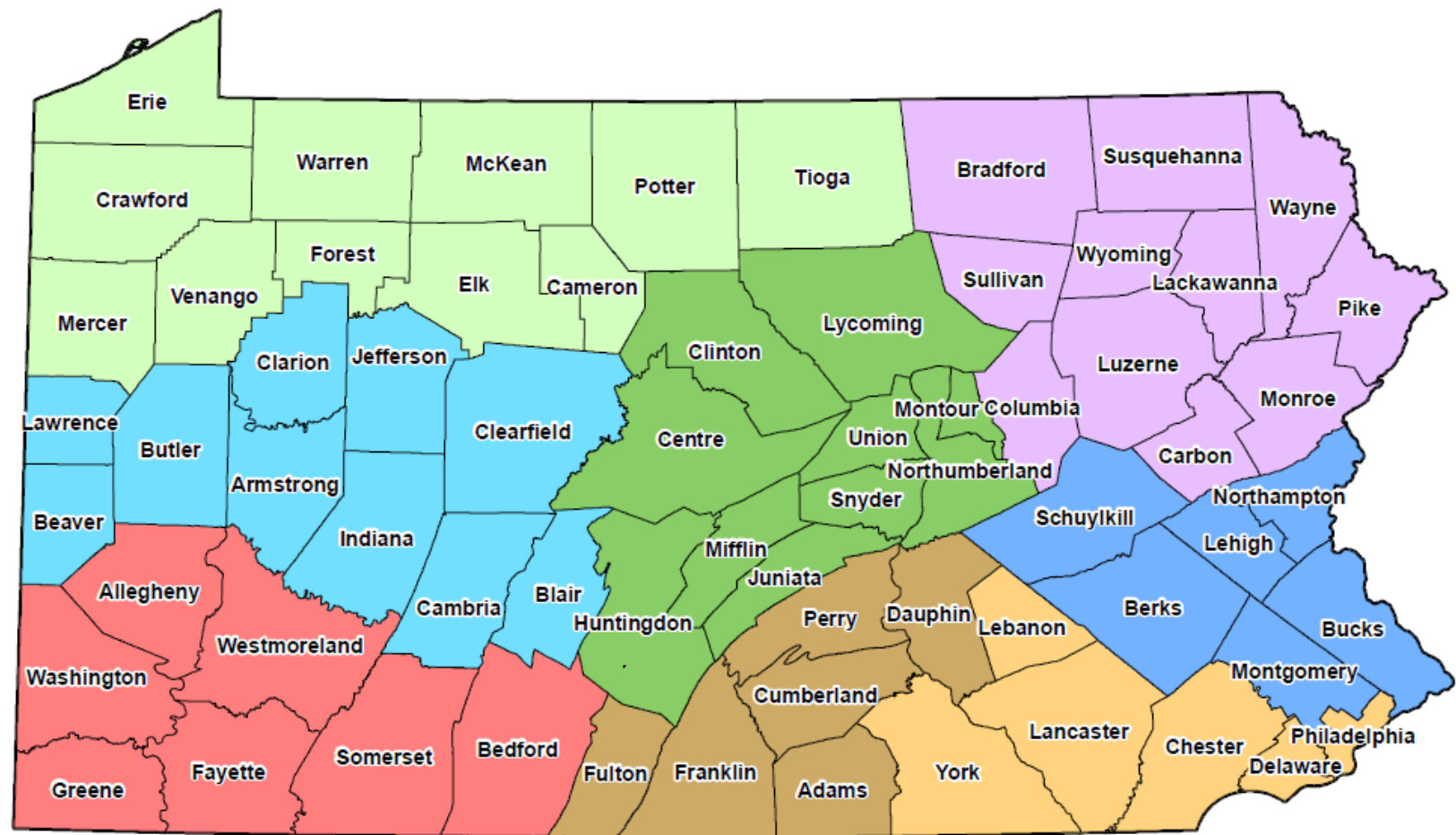
<https://maps.dcnr.pa.gov/landownerassist/>



Watershed Forestry Program

Regional Watershed Forestry Specialists are available to assist with:

- Riparian Forest Buffer Projects
 - Lawn-to-Habitat Projects
 - Landowner site visits
 - Planting plan development
- Locating funding (Direct Contracting/ITQ or C2P2, etc.)
 - Help with WF-related grant applications
 - Species recommendations
 - Maintenance recommendations
- Connecting to other partners and efforts



Legend

- NW - Josh Thomas | c-tjosh@pa.gov
- W - Danielle Rihel | c-drihel@pa.gov
- SW - Stephanie Jellison | c-sjelliso@pa.gov
- C - Eric Livelsberger | c-elivelsb@pa.gov
- SC - Marlin Graham | c-magraham@pa.gov
- NE - Vacant
- SE↑ - Nikki Lee | c-nicollee@pa.gov
- SE↓ - Alyssa Keiser | c-akeiser@pa.gov

0 12.5 25 50 75 100 Miles



Lawn Conversion Program is now Lawn-to-Habitat Program

- Converts LAWN to either forest or native meadow.
- Lawn is defined as grass that is regularly mowed and maintained as a lawn. Typically, this means grass height does not exceed 6-8" at any point in time during the growing season.
- Any size lawn-to-habitat projects can be funded through C2P2 grants.
- Direct Contracting/ITQ projects only fund lawn-to-habitat projects that are at least half an acre in size.
- Site prep for lawn-to-meadow projects typically require use of herbicides.
- Long waiting lists! Very high demand, limited funding available.



Urban and Community Forestry Program (formerly know as TreeVitalize)

- Expanding! New Regional Community Tree Specialists coming on board now.
- Influx of federal funding for urban and community forestry
- Can assist with tree planting and planning in communities

Contact:

Ned Brockmeyer

Urban and Community Forestry Program
Manager

c-jobrockm@pa.gov



Woodland Stewardship Program

- Work through our Service Foresters to help private forest landowners with their forest management goals.
- Get information on:
 - Managing woodlots/private forests
 - Treating invasive species in forested areas
 - Agroforestry
 - Ecosystem products and markets
 - Carbon credit programs
 - NRCS & USFS forest programs



Contacts:

John Portzline, Woodland Stewardship Section Chief: jportzline@pa.gov

John Schwartzer, Woodland Stewardship Practices Specialist: jschwartz@pa.gov

Robbie Coville, Ecosystem Products and Markets Specialist: rcoville@pa.gov

Other DCNR Collaborations with Conservation Districts

- Park and Forest Infrastructure
Roads, bridges, buildings, oil and gas, etc.
- Timber Harvesting, E&S
- AML Restoration
- PA Natural Heritage Program and Conservation Explorer
PNDI reviews



Questions?

Thank you!

Teddi Stark
Watershed Forestry Program Manager
c-tstark@pa.gov